

Coronavirus disease 2019 (COVID-19)

Situation Report – 39

Data as reported by 10AM CET 28 February 2020

HIGHLIGHTS

- Five new Member States (Belarus, Lithuania, Netherlands, New Zealand, and Nigeria) reported cases of COVID-19 in the past 24 hours.
- WHO has increased the assessment of the risk of spread and risk of impact of COVID-19 to very high at the global level. More information can be found [here](#).
- The WHO-China Joint Mission, which was conducted from 16 through 24 February, has published its findings. The full report can be found [here](#).
- WHO has updated the guidance on [Global Surveillance for human infection with coronavirus disease \(COVID-19\)](#). This document includes revised surveillance case definitions for COVID-19. It is also accompanied by a revised Case Reporting Form, line listing template, and data dictionary.
- Table 2 in this Situation Report, "Countries, territories or areas outside China with reported laboratory-confirmed COVID-19 cases and deaths", has been simplified and now includes transmission classification. See Table 2 footnotes for additional information.
- As of 27 February, there are 36 117 (26 403 in Hubei and 15 826 in Wuhan) cases who have recovered from COVID-19 in China.
- Under the International Health Regulations (2005), States Parties implementing additional health measures that significantly interfere with international traffic shall notify WHO of the public health rationale of those measures within 48 hours of their implementation. As of 27 February, 41 States Parties are officially reporting additional health measures. More information can be found in the Subject in Focus.

SITUATION IN NUMBERS

total and new cases in last 24 hours

Globally

83 652 confirmed (1358 new)

China

78 961 confirmed (331 new)
2791 deaths (44 new)

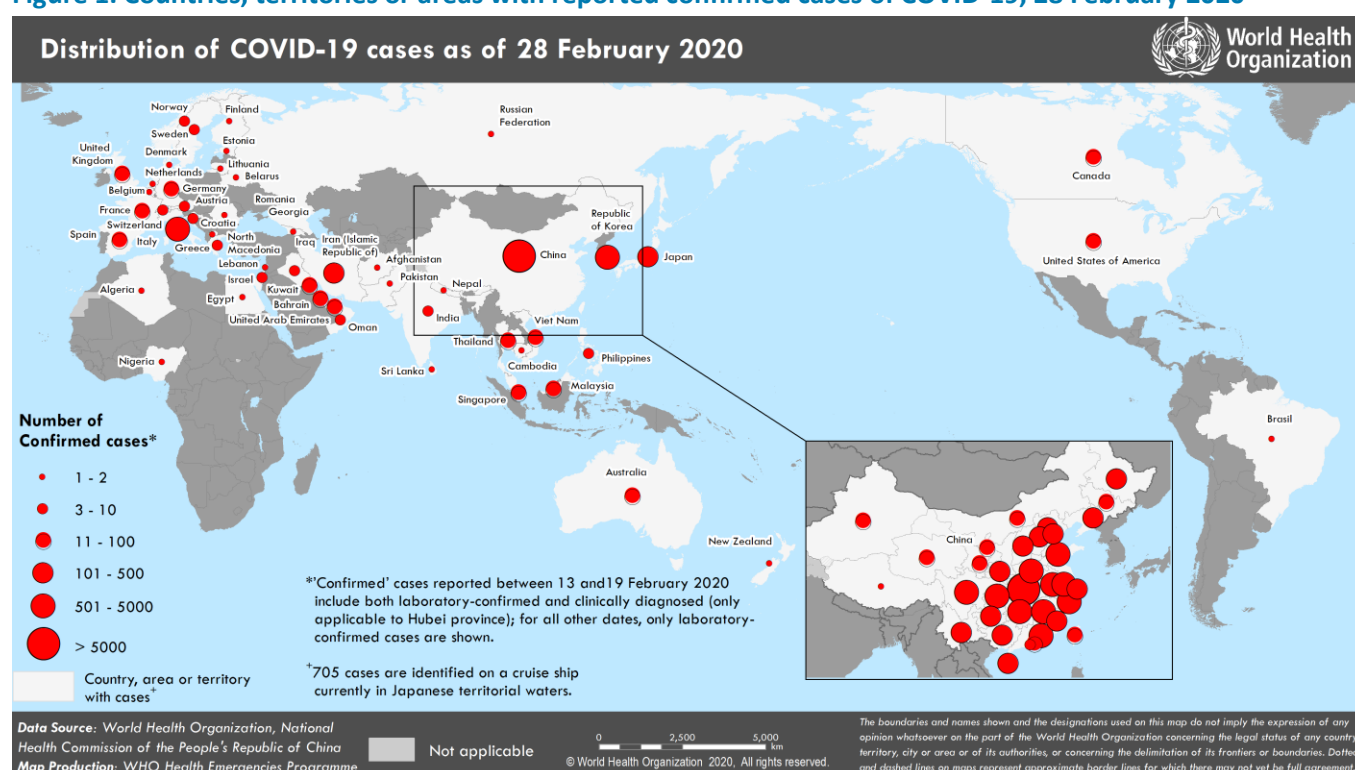
Outside of China

4691 confirmed (1027 new)
51 countries (5 new)
67 deaths (10 new)

WHO RISK ASSESSMENT

China	Very High
Regional Level	Very High
Global Level	Very High

Figure 1. Countries, territories or areas with reported confirmed cases of COVID-19, 28 February 2020



SUBJECT IN FOCUS: UPDATE ON ADDITIONAL HEALTH MEASURES

As of 27 February 2020, 41 States Parties have provided to WHO official reports on additional health measures that significantly interfere with international traffic under Article 43 of the International Health Regulations (2005), of which 14 are small island developing states. Seven States Parties provided updates on the measures they have previously reported on. Eleven of the 41 States Parties are now reporting such measures against countries other than China. No trade restrictions have been reported to date. Table 1 presents a summary of additional health measures officially reported to WHO under Article 43 from 6 – 28 February, by WHO region.

Table 1. Number of States Parties officially reporting additional health measures that significantly interfere with international traffic (i.e. more than 24h delay), under Article 43 of the IHR (2005) (by WHO region)

WHO Region	Date States Parties provided to WHO official reports on additional health measures				Total
	6 Feb	12 Feb	20 Feb	28 Feb	
AMRO-PAHO	10	2	0	0	12
AFRO	0	1	0	0	1
EMRO	0	1	0	1	2
EURO	2	1	2	5	10
SEARO	1	0	0	0	1
WPRO	9	3	2	1	15
Total	22	8	4	7	41

The majority of these measures are related to denial of entry of travelers originating from China or from countries reporting on-going transmission of COVID-19, quarantine requirements for foreigners, self-isolation of returning nationals, and visa restrictions. The public health rationale for these additional health measures is mainly linked to vulnerabilities (e.g. lack of capacity for diagnostic and response, small island states context) in receiving countries, and the uncertainties about the virus transmission and disease severity.

Preliminary analysis of countries reporting cases that have imposed restrictive measures suggest that such measures may have delayed the importation of new cases, but did not prevent the importation of the disease. WHO has emphasized to Member States that additional measures should be proportionate to the public health risk, short in duration, and reconsidered in light of the evolution of the outbreak and the constant advancements of knowledge about the virus and the disease.

WHO has published updated advice for [international traffic](#), and continues to recommend against the application of any travel or trade restrictions in relation to the current COVID-19 outbreak.

WHO continues to engage with travel and tourism international organizations and industry associations to enable compliance with the IHR on avoidance of unnecessary interference with international traffic. Joint statements have been issued by WHO in collaboration with the [International Maritime Organization \(IMO\)](#), and [UN World Tourism Organization \(UNWTO\)](#), and will shortly be issues in collaboration with the International Civil Aviation Organization (ICAO).

SURVEILLANCE

Table 1. Confirmed and suspected cases of COVID-19 acute respiratory disease reported by provinces, regions and cities in China, Data as of 28 February 2020

Province/ Region/ City	Population (10,000s)	Daily			Cumulative	
		Confirmed cases	Suspected cases	Deaths	Confirmed cases	Deaths
Hubei	5917	318	332	41	65914	2682
Guangdong	11346	1	2	0	1348	7
Henan	9605	0	1	0	1272	20
Zhejiang	5737	0	0	0	1205	1
Hunan	6899	0	0	0	1017	4
Anhui	6324	1	0	0	990	6
Jiangxi	4648	1	0	0	935	1
Shandong	10047	0	0	0	756	6
Jiangsu	8051	0	0	0	631	0
Chongqing	3102	0	6	0	576	6
Sichuan	8341	4	4	0	538	3
Heilongjiang	3773	0	0	0	480	13
Beijing	2154	0	12	2	410	7
Shanghai	2424	0	36	0	337	3
Hebei	7556	1	0	0	318	6
Fujian	3941	0	0	0	296	1
Guangxi	4926	0	0	0	252	2
Shaanxi	3864	0	0	0	245	1
Yunnan	4830	0	4	0	174	2
Hainan	934	0	5	0	168	5
Guizhou	3600	0	1	0	146	2
Tianjin	1560	1	24	0	136	3
Shanxi	3718	0	0	0	133	0
Liaoning	4359	0	22	0	121	1
Jilin	2704	0	3	0	93	1
Hong Kong SAR	745	2	0	0	93	2
Gansu	2637	0	0	0	91	2
Xinjiang	2487	0	0	1	76	3
Inner Mongolia	2534	0	0	0	75	0
Ningxia	688	0	0	0	72	0
Taipei and environs	2359	2	0	0	34	1
Qinghai	603	0	0	0	18	0
Macao SAR	66	0	0	0	10	0
Xizang	344	0	0	0	1	0
Total	142823	331	452	44	78961	2791

Table 2. Countries, territories or areas outside China with reported laboratory-confirmed COVID-19 cases and deaths. Data as of 28 February 2020

Country	Total confirmed* cases (new)	Total deaths (new)	Transmission classification [†]	Days since last reported case
Western Pacific Region				
Republic of Korea	2337 (571)	13 (0)	Local transmission	0
Japan	210 (24)	4 (1)	Local transmission	0
Singapore	96 (3)	0 (0)	Local transmission	0
Malaysia	24 (2)	0 (0)	Local transmission	0
Australia	23 (0)	0 (0)	Local transmission	3
Viet Nam	16 (0)	0 (0)	Local transmission	15
Philippines	3 (0)	1 (0)	Imported cases only	24
Cambodia	1 (0)	0 (0)	Imported cases only	32
New Zealand	1 (1)	0 (0)	Imported cases only	0
European Region				
Italy	650 (250)	17 (5)	Local transmission	0
France	38 (20)	2 (0)	Local transmission	0
Germany	26 (5)	0 (0)	Local transmission	0
Spain	25 (13)	0 (0)	Local transmission	0
The United Kingdom	16 (3)	0 (0)	Local transmission	0
Sweden	7 (5)	0 (0)	Imported cases only	0
Switzerland	6 (5)	0 (0)	Imported cases only	0
Austria	4 (2)	0 (0)	Imported cases only	0
Norway	4 (3)	0 (0)	Imported cases only	0
Greece	3 (2)	0 (0)	Imported cases only	0
Israel	3 (1)	0 (0)	Imported cases only	0
Croatia	3 (0)	0 (0)	Local transmission	0
Finland	2 (0)	0 (0)	Imported cases only	2
Russian Federation	2 (0)	0 (0)	Imported cases only	28
Belarus	1 (1)	0 (0)	Imported cases only	0
Lithuania	1 (1)	0 (0)	Imported cases only	0
Netherlands	1 (1)	0 (0)	Imported cases only	0
North Macedonia	1 (0)	0 (0)	Imported cases only	2
Romania	1 (0)	0 (0)	Imported cases only	1
Belgium	1 (0)	0 (0)	Imported cases only	24
Denmark	1 (0)	0 (0)	Imported cases only	1
Estonia	1 (0)	0 (0)	Imported cases only	1
Georgia	1 (0)	0 (0)	Imported cases only	1
South-East Asia Region				
Thailand	40 (0)	0 (0)	Local transmission	2
India	3 (0)	0 (0)	Imported cases only	25
Nepal	1 (0)	0 (0)	Imported cases only	46
Sri Lanka	1 (0)	0 (0)	Imported cases only	32
Eastern Mediterranean Region				
Iran (Islamic Republic of)	245 (104)	26 (4)	Local transmission	0
Kuwait	43 (0)	0 (0)	Imported cases only	1
Bahrain	33 (0)	0 (0)	Imported cases only	1
United Arab Emirates	19 (6)	0 (0)	Local transmission	0
Iraq	7 (1)	0 (0)	Imported cases only	0
Oman	6 (2)	0 (0)	Imported cases only	0
Lebanon	2 (0)	0 (0)	Imported cases only	2
Pakistan	2 (0)	0 (0)	Imported cases only	2
Afghanistan	1 (0)	0 (0)	Imported cases only	4

Egypt	1 (0)	0 (0)	Imported cases only	14
Region of the Americas				
United States of America	59 (0)	0 (0)	Local transmission	2
Canada	11 (0)	0 (0)	Imported cases only	2
Brazil	1 (0)	0 (0)	Imported cases only	2
African Region				
Algeria	1 (0)	0 (0)	Imported cases only	3
Nigeria	1 (1)	0 (0)	Imported cases only	0
Subtotal for all regions	3986 (1027)	63 (10)		
International conveyance (Diamond Princess) †	705 (0)	4 (0)	Local transmission	2
Grand total[§]	4691 (1027)	67 (10)		

*Case classifications are based on [WHO case definitions](#) for COVID-19.

†Transmission classification is based on WHO analysis of available official data and may be subject to reclassification as additional data become available. Countries/territories/areas experiencing multiple types of transmission are classified in the highest category for which there is evidence; they may be removed from a given category if interruption of transmission can be demonstrated. It should be noted that even within categories, different countries/territories/areas may have differing degrees of transmission as indicated by the differing numbers of cases and other factors. Not all locations within a given country/territory/area are equally affected.

Terms:

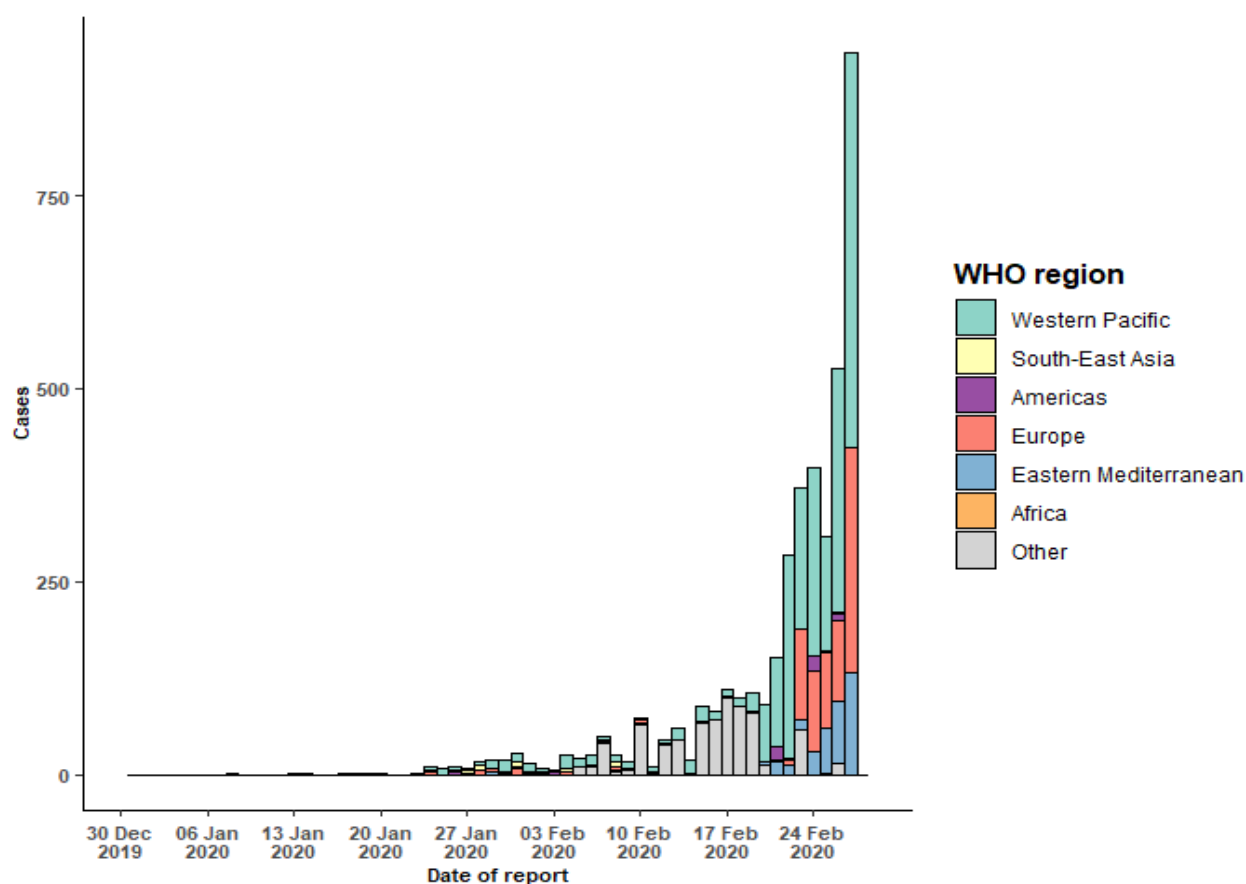
- **Community transmission** is evidenced by the inability to relate confirmed cases through chains of transmission for a large number of cases, or by increasing positive tests through routine screening of sentinel samples.
- **Local transmission** indicates locations where the source of infection is within the reporting location.
- **Imported cases only** indicates locations where all cases have been acquired outside the location of reporting.
- **Under investigation** indicates locations where type of transmission has not been determined for any cases.
- **Interrupted transmission** indicates locations where interruption of transmission has been demonstrated (details to be determined)

‡Cases identified on a cruise ship currently in Japanese territorial waters.

§250 female/363 male/4078 unknown. 28 healthcare workers (5 female/12 male/ 11 unknown)

Corrigendum: Values under 'Days since last reported case' have been updated to reflect time of reporting within a given day

Figure 2. Epidemic curve of confirmed COVID-19 cases (n=4072) reported outside of China, by date of report and WHO region with complete days of reporting through 27 February 2020



STRATEGIC OBJECTIVES

WHO's strategic objectives for this response are to:

- Interrupt human-to-human transmission including reducing secondary infections among close contacts and health care workers, preventing transmission amplification events, and preventing further international spread*;
- Identify, isolate and care for patients early, including providing optimized care for infected patients;
- Identify and reduce transmission from the animal source;
- Address crucial unknowns regarding clinical severity, extent of transmission and infection, treatment options, and accelerate the development of diagnostics, therapeutics and vaccines;
- Communicate critical risk and event information to all communities and counter misinformation;
- Minimize social and economic impact through multisectoral partnerships.

*This can be achieved through a combination of public health measures, such as rapid identification, diagnosis and management of the cases, identification and follow up of the contacts, infection prevention and control in health care settings, implementation of health measures for travelers, awareness-raising in the population and risk communication.

PREPAREDNESS AND RESPONSE

- To view all technical guidance documents regarding COVID-19, please go to [this webpage](#).
- WHO is working closely with International Air Transport Association (IATA) and have jointly developed a guidance document to provide advice to cabin crew and airport workers, based on country queries. The guidance can be found on the [IATA webpage](#).
- WHO has been in regular and direct contact with Member States where cases have been reported. WHO is also informing other countries about the situation and providing support as requested.
- WHO has developed interim guidance for [laboratory diagnosis](#), [advice on the use of masks during home care and in health care settings in the context of the novel coronavirus \(2019-nCoV\) outbreak](#), [clinical management](#), [infection prevention and control in health care settings](#), [home care for patients with suspected novel coronavirus](#), [risk communication and community engagement](#) and [Global Surveillance for human infection with novel coronavirus \(2019-nCoV\)](#).
- WHO is working with its networks of researchers and other experts to coordinate global work on surveillance, epidemiology, modelling, diagnostics, clinical care and treatment, and other ways to identify, manage the disease and interrupt onward transmission. WHO has issued interim guidance for countries, which are updated regularly.
- WHO is working with global expert networks and partnerships for laboratory, infection prevention and control, clinical management and mathematical modelling.
- WHO has prepared [disease commodity package](#) that includes an essential list of biomedical equipment, medicines and supplies necessary to care for patients with 2019-nCoV.
- WHO has provided recommendations to reduce risk of [transmission from animals to humans](#).
- WHO has published an [updated advice for international traffic in relation to the outbreak of the novel coronavirus 2019-nCoV](#).
- WHO has activated of R&D blueprint to accelerate diagnostics, vaccines, and therapeutics.
- WHO has developed online courses on the following topics: [A general introduction to emerging respiratory viruses](#), including novel coronaviruses (available in [French](#), [Chinese](#), [Spanish](#), and [Portuguese](#)); [Critical Care of Severe Acute Respiratory Infections](#); and [Health and safety briefing for respiratory diseases - ePROTECT](#)

(available in [French](#)); [Infection Prevention and Control for Novel Coronavirus \(COVID-19\)](#); [Critical Care Severe Acute Respiratory Infection](#)

- WHO is providing guidance on early investigations, which are critical to carry out early in an outbreak of a new virus. The data collected from the protocols can be used to refine recommendations for surveillance and case definitions, to characterize the key epidemiological transmission features of COVID-19, help understand spread, severity, spectrum of disease, impact on the community and to inform operational models for implementation of countermeasures such as case isolation, contact tracing and isolation. Several protocols are available here: <https://www.who.int/emergencies/diseases/novel-coronavirus-2019/technical-guidance/early-investigations>
One such protocol is for the investigation of early COVID-19 cases and contacts (the “[First Few X \(FFX\) Cases and contact investigation protocol for 2019-novel coronavirus \(2019-nCoV\) infection](#)”). The protocol is designed to gain an early understanding of the key clinical, epidemiological and virological characteristics of the first cases of COVID-19 infection detected in any individual country, to inform the development and updating of public health guidance to manage cases and reduce potential spread and impact of infection.

RECOMMENDATIONS AND ADVICE FOR THE PUBLIC

If you are not in an area where COVID-19 is spreading, or if you have not travelled from one of those areas or have not been in close contact with someone who has and is feeling unwell, your chances of being infected are low. It is understandable that you may feel stressed and anxious about the outbreak. It’s a good idea to get the facts from reliable sources to help you accurately determine your risks so that you can take reasonable precautions. (See [Frequently Asked Questions](#)). Seek guidance from WHO, your healthcare provider, your national public health authority and your employer on accurate information on COVID-19 and whether COVID-19 is circulating where you live. It is important to be informed of the situation and take appropriate measures to protect yourself and your family (see [Protection measures for everyone](#)).

If you are in an area where there is an outbreak of COVID-19 you need to take the risk of infection seriously. Follow the advice of WHO and guidance issued by national and local health authorities. Although for most people COVID-19 infected will cause mild illness, it can make some people very ill and in some people it can be fatal. Older people, and those with pre-existing medical conditions (such as cardiovascular disease, chronic respiratory disease or diabetes) appear to be at risk for severe disease (See [Protection measures for persons who are in or have recently visited \(past 14 days\) areas where COVID-19 is spreading](#)).